

PE/Cy5 Anti-Human CD8 (OKT8) Monoclonal Antibody



天津三箭生物技术股份有限公司
Tianjin Sungene Biotech Co., Ltd.
精准 高效 稳定 Precision Efficient Stable

Catalog Number	Vial Size
H10082-35G	25 tests
H10082-35H	100 tests

Market | 400-621-0003
marketing@sungenebiotech.com

Support | 022-66211636-8024
techsupport@sungenebiotech.com

Web | www.sungenebiotech.com

Important Note: Centrifuge before opening to ensure complete recovery of vial contents.
This product is guaranteed up to one year from purchase.

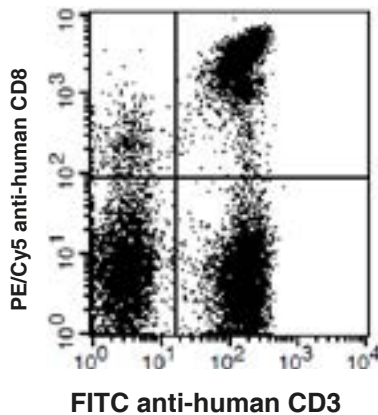
Purified Antibody Characterization

Clone	Isotype	Reactivity
OKT8	Mouse IgG2a	Human

Description

CD8 is known as T8 and Leu2, is a member of the immunoglobulin superfamily found on the majority of thymocytes, a subset of peripheral blood T cells, and NK cells (which express almost exclusively CD8a homodimers). CD8 acts as a co-receptor with MHC class I-restricted T cell receptors in antigen recognition and T cell activation and has been shown to play a role in thymic differentiation.

Illustration of Immunofluorescent Staining



Human peripheral blood lymphocytes stained with PE/Cy5 anti-human CD8 and FITC anti-human CD3

Product Information

Conjugation: PE/Cy5

Formulation: PBS pH 7.2, 0.09% NaN₃, 0.2% BSA

Storage: Keep as concentrated solution. Store at 4°C and protected from prolonged exposure to light. **Do not freeze.**

Application: Recommended Application: FC

Usage: Each lot of this antibody is quality control tested by immunofluorescent staining with flow cytometric analysis (The amount of the reagent is suggested to be used from 20 µL to 5 µL per 100 µL of peripheral blood. Please check your vial). Since applications vary, the appropriate dilutions must be determined for individual use.

References

- [1] Schlossman, S., et al. Eds. 1995. Leucocyte Typing V. Oxford University Press. New York.
- [2] Knapp, W. 1989. Leucocyte Typing IV. Oxford University Press, New York.
- [3] Barclay, N., et al. 1997. The Leucocyte Antigen Facts Book. Academic Press Inc. San Diego.

For Research Use Only.